

## Our Mission

- ▶ To protect the public health and environment.
- ▶ To provide for safe and cost-efficient collection of sewage waste.
- ▶ To provide for effective conveyance to the Treatment Plant.



20863 Stevens Creek Boulevard  
Suite 100  
Cupertino, CA 95014

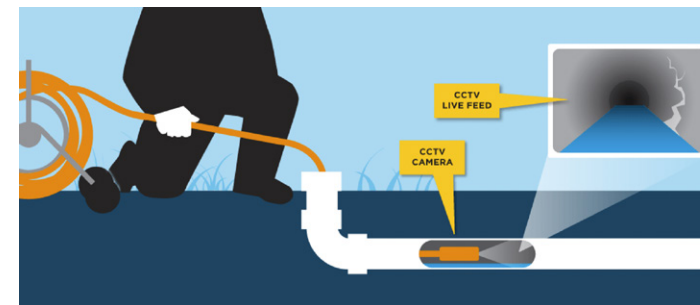
Phone: 408.253.7071 Fax: 408.253.5173  
[www.cupertinosanitarydistrict.org](http://www.cupertinosanitarydistrict.org)

## Peak Flow Reduction Program

CuSD has an ongoing program to identify and reduce Inflow and Infiltration (I/I) in the District's sewer system. Inflow is storm water that enters the system through illicit connections to the sanitary sewer system and Infiltration is storm-water and groundwater that enter through cracks in laterals, mains, and manholes. These flows can significantly limit the ability of the sewer system to convey sewer flows. Cupertino Sanitary District estimates that I/I can make up as much as 50 percent of peak flow in the sewer system during wet weather – and that much of this I/I originates on private property through illicit connections. If I/I is not corrected, it may cost the District millions of dollars to mitigate and will restrict new development projects in the District, while also impacting our capacity agreements. The purpose of the program is to reduce the amount of peak flow entering and exiting the District's sewer system. Reduction of I/I in the system has the potential to lower the risk of sanitary sewer overflows and decrease the costs of conveying and treating wastewater. The District is implementing I/I reduction feasibility studies and analysis in the peak flow project as to assess the cost-effectiveness of I/I reduction. The program is on a scale large enough to potentially offset the need for larger conveyance or storage facilities. The program is implemented in four phases, described below.

### ▶ PHASE 1: Find Sources of I/I

The District uses Sewer System Evaluation Surveys (SSES) to examine the condition of sewers located on the private/public property lines to identify the likely sources of I/I. SSES methods include smoke testing and closed circuit television (CCTV) inspection.



CCTV cameras are robotically sent through sanitary sewer lines and along each side sewer to record a video of sewer conditions. CCTV inspections can identify breaks, root intrusion, leaking water and deteriorating conditions.

Smoke Testing involves pumping smoke through sewers from manholes in streets and observing where the smoke exits. The exiting smoke can indicate a broken pipe, or where the roof or foundation drains might be illegally connected to the sewer system.

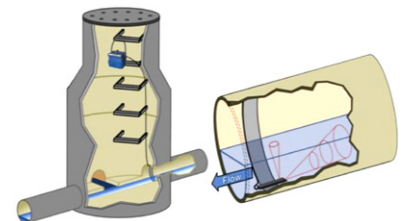


### ▶ PHASE 2: Fix Sources of I/I

Once the sources of I/I have been identified, the defects that are allowing I/I to enter the sewer system will be repaired. The primary focus of these repairs will be to fix broken pipes, manholes, and joint connections. Another focus is to reduce the amount of I/I that enters the sewer system from storm events by disconnecting roof drain downspouts and other building or yard drains that may be directly connected to the sewer and capping cleanouts.

### ▶ PHASE 3: Measure Sewer Flows During Rainfall Events

Flow is measured with metering equipment to determine the rainfall that enters the sewer system. Flow Monitoring can help to identify areas of high flows during a rainfall event, indicating the presence of inflow, infiltration, or both.



### ▶ PHASE 4: Model Peak Flows and Consider Storage

Metered flows are used as input to a hydraulic model of the Cupertino sewer system. The model will be used to determine how I/I flows impact the capacity and peak flow in the system and to assess whether there is sufficient capacity available to accommodate new development in the community.

## District News & Highlights

Cupertino Sanitary District

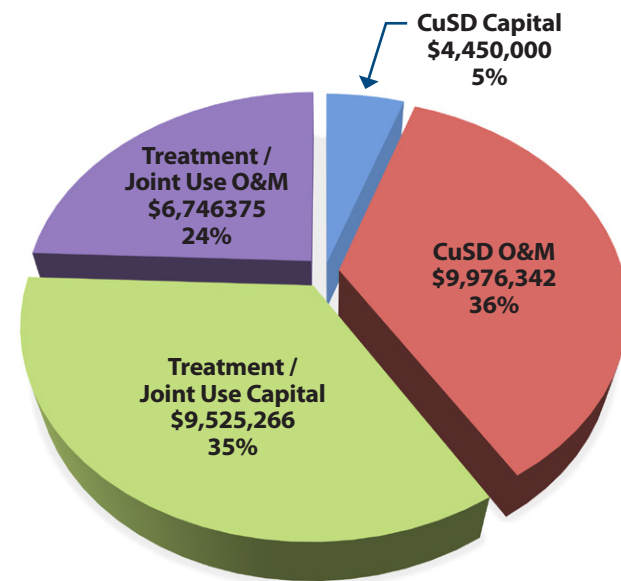
# 2021

## ANNUAL REPORT

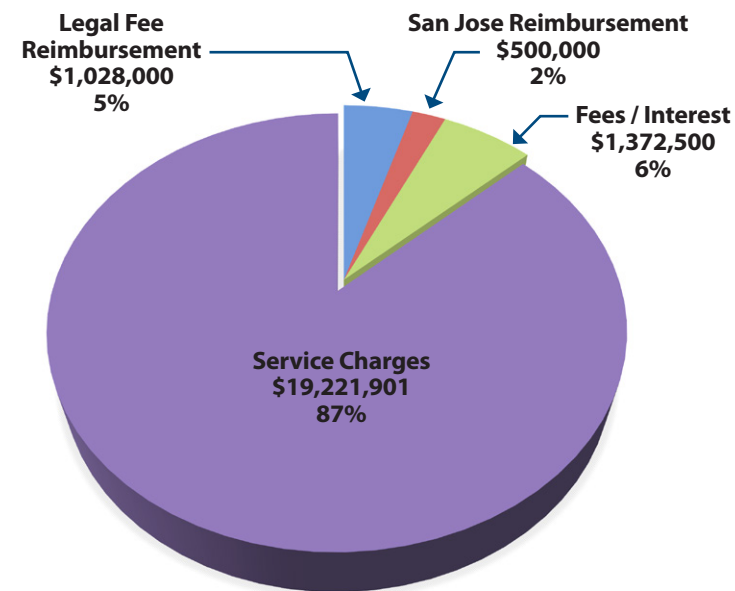


## Facts and Figures

### ► Expenses for FY 2021-22



### ► Revenue for FY 2021-22



## Notable Accomplishments

- The District Board and Staff completed a comprehensive assessment of the cost of service for each of the District's customers, including residential type, commercial type, and whether the user required pump stations for the conveyance of wastewater to the treatment plant, as defined by regulatory requirements. The District Board adjusted the rates accordingly, based on the cost of service.
- The District has responded to COVID-19 by continuing its operations and maintenance without interruption. Please do your share to help us keep our sewer system running smoothly.

## Annual Maintenance Program

The District continues to implement its annual maintenance program, District-wide, to help ensure our sewer system is running smoothly. With routine maintenance, we are able to better serve you by keeping the sewer lines clear and focusing on areas with a history of root intrusion and regular stoppages.

The District's contractors access property line cleanouts to rod and flush the lower sewer lateral, pulling out any roots and debris found in the line. Our contractors are licensed professionals who have been working with the District for several years. To see if your property is on our annual maintenance list, or to request service, call our office at (408) 253-7071 and our staff will be happy to assist you.

## COVID-19 Updates

We know you're working hard to keep yourselves healthy during the COVID-19 pandemic. There has been an increase in the flushing of toilet paper, paper towels, rags, and disposable wipes. Toilet paper readily breaks down in the system and does not cause issues. However, other paper products do not break down as easily and can create blockage problems in your private lateral and the public sewer.

Help us keep our sewers healthy. Remember to never flush wipes, paper towels or tissues because they clog our pump stations and our pipes! The District has 17 pump stations and it has become a major maintenance issue, resulting in additional costs to maintain the sewer system.

For more information, go to [www.cupertinosanitarydistrict.org](http://www.cupertinosanitarydistrict.org) where you will find additional information and links to recent media coverage, or contact us at (408) 253-7071.

### DON'T FLUSH WIPES!

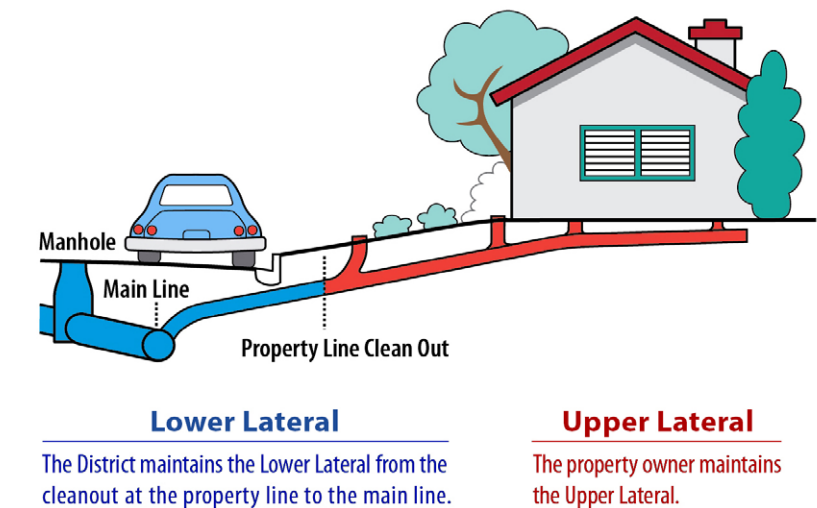


## Who's Responsible for What?

### Homeowner's Responsibility:

The owner is responsible for the "Upper Lateral" portion of the House Lateral. If a blockage occurs within the property line, then it is up to the homeowner to take responsibility.

A Property Line Clean Out is required by the District to service Lower Laterals. It is the owner's responsibility to have one installed, properly maintained, and accessible at all times.



### District's Responsibility:

The District is responsible for the lower lateral portion of the house lateral. The main sewer line is serviced by the District. If a property line cleanout does not exist, the District will not be able to access our portion of the lateral. It is the responsibility of the homeowner to have a property line clean out installed.